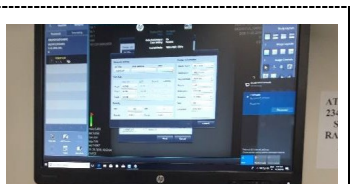
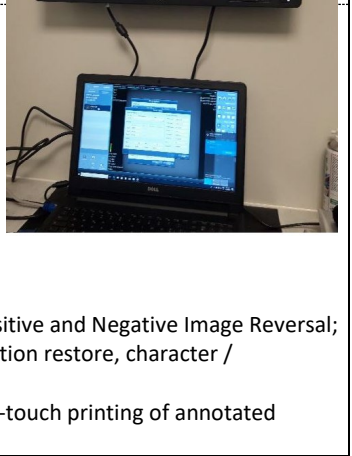





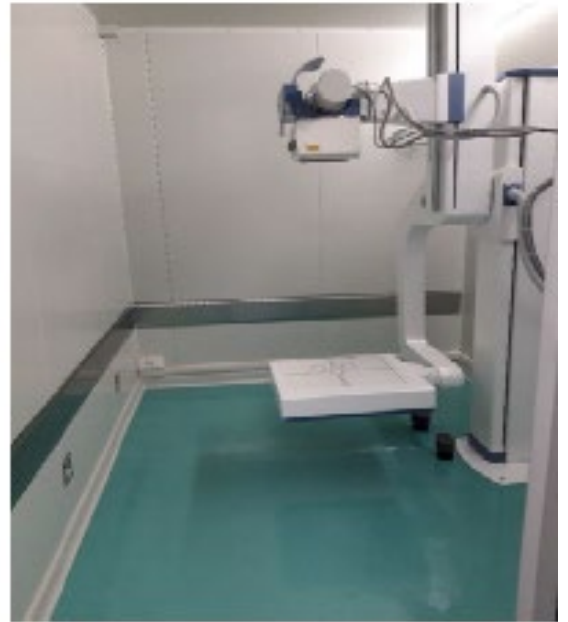


Object : X-RAY MEDICAL MOBILE UNIT

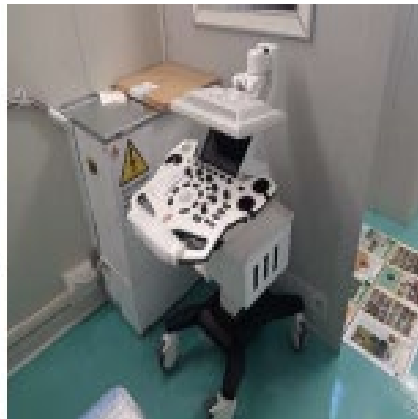
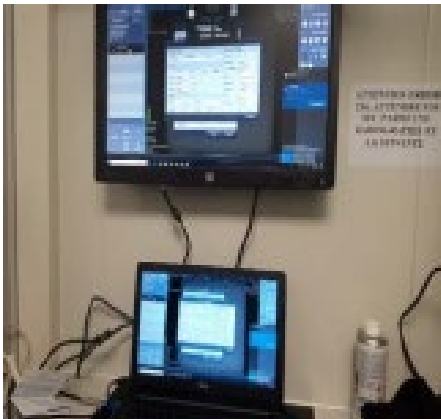
A	<p>Rotating U arm x-ray system Composition</p>
A1	<p>High Frequency x-ray generator BRG-200 RC http://www.esse3.dreamgest.com/userfiles/file/RADIOLOGY/BRS/BRG-200RC_ENG.pdf with energy accumulation through 16 capacitors for performing high quality radiographic images by using a standards main supply line or autonomous generator provider. Radiographic data: 50 KW - 150 KV - 630 mA. Min. exposure time: 1 msec Anatomical programming module and Tomo funtion. Microprocessor control unit. Output for one X-Ray tube. Power supply: Single 220/240 V ± 10% 50/60 Hz 25 A max/16 A Mini console with on/off and x-ray exposure push button</p>
A2	<p>X-ray tube E7884X http://www.esse3.dreamgest.com/userfiles/file/RADIOLOGY/X-RAY%20TUBES/E7884X.pdf focus 0.6 - 1.2 mm 150 KV 22/54 KW - 300 KHU Wuth pair of HT cables lenght 8 mt</p>
A3	<p>Rotating arm BRS-DR Catalog by e-mail Universal stand with variable focal distance, detector rotation and tube housing rotation. featured with electromagnetic brakes, motorized up/down movement, SID and arm rotation. Includes manual collimator and support for digital detector, flat Range of rotation of the detector: ±90° Motorized vertical movement 1450 mm Minimum height from floor of X-Ray focus 365 mm Range of arm rotation at U 30° left / 120° right Focal distance variable from 1000 to 1800 mm x-ray tube rotation 180° left, 180° right with ELM Brake Angle indicator inclinometer Manual collimator included</p>
A4	<p>Table radiographique MHT http://www.esse3.dreamgest.com/userfiles/file/RADIOLOGY/BRS/MHT.pdf Mobile horizontal table with 4 lokable wheels. Fixed table top.</p>
	<p>Flat panel detector DR FX1717SB Receiver Type: Flatbed Detector: a-Si TFT with PIN diode Size: 460mm (W) × 460 (W) mm × 15.5 (T) mm Effective size: 43cm × 43cm (17 "× 17") Weight: 4.2kg Pixel matrix: 3072 (h) × 3072 (v) Pixel size: 140um X-ray voltage range: 40 ~ 150kV X-ray generator interface: - Line trigger: DR Trigger Mode - Automatic detection: AED mode (automatic detection of exposure) Spatial resolution: 3.5lp / mm Image acquisition time: 1.5s A / D converter: 16bit Ambient temperature: 15 ° C ~ 35 ° C DQE: 30% ~ 85% Data Transfer: Giga Ethernet Control Instruction Transfer: Giga Ethernet Calibration Mode: Offset Calibration, Gain Calibration, Incorrect Pixel Calibration</p>



A5	<p>Notebook DELL VOSTRO 3578 CPU: Intel dual core 4GHz LCD color screen 15'' Memory : 2 Go HDD: 500 Go Equipped with supplementary LCD color monitor 23'' HP</p>	
A6	<p>IMAGE PROCESSING SOFTWARE Importing software synergizes with the detector - Wire connection with the generator - Available to adjust generator settings on the workstation, patient registration \submit and edit patient information, launch the exposure OS: Windows XP APR function (programming and automatic recording) Image viewer: display, analysis, processing, output images Data Management: database of import, export and batch file data, all compliant with DICOM 3.0 Image processing: Window Width / Level, Window Width / Level Adjustment, Preview, Width / Window Level Preset, Positive and Negative Image Reversal; Tilting image, rotation, zoom, roaming; Image interpolation edge enhancement, original image annotation restore, character / annotation number, image annotation, tape measure, zone metering, auto pane Image printing: DICOM printing, Printed paper, Manual selection of images displayed for printing, One-touch printing of annotated images, Various compatible printing equipment, Printing as a film, Number of prints</p>	
B	<p>Dry laser film printer DICOM HighCapXp Catalog by e-mail</p>	
C	<p>Electric generator 10KVA GP 10000 MANUAL/automatic ELECTRIC START The group will be housed inside the medical cabin in a space that is both insulated and soundproof easy to inspect; the rest of the available space (width 2.40 and height 2.40 mt and depth 1 mt) will be used as a storage cabinet for accessories and films Equipped with 10KVA protection inverter, complete with rechargeable battery for manual and automatic start</p>	
D	<p>UPS 10KVA MSN10 With rechargeable battery, autonomy 1H</p>	
E	<p>SHELTER 20'' TYPE HQ External height 2900 mm, internal 2.680 mm External length 6050 mm, internal 5995 mm External width 2438 mm, internal 2340 mm</p>	
	<p>INTERNAL INSTALLATION - Soundproof service section for the generator set, the automatic start cabinet, the 10KVA UPS , the air conditioning unit - Observation / office section with leaded and leaded door - X-ray / ultrasound section with pavement and leaded walls .leaded window - Medical pavement - Electrical system for the 3 sections - Air conditioning of both sections - Complementary accessories (entrance door, removable ladder, retractable awning, electric accessing ramp , etc.</p>	
F	<p>RADIOPROTECTION MATERIAL - Qty 6 rolls of leaded pavement, walsl and door of radiology section set of radioprotection accessories - 1 leaded aron - 1 pair of leaded gloves - 1 gonad protection set - 1 ovarian protection set - 1 thyroid protection set - 1 leaded window</p>	
G	<p>LOW SEMI TRAILER for 20' container</p>	
	<p>Option</p>	
H	<p>TRACTOR TRUCK IVECO STRALIS <i>See ANNEXE I</i></p>	



ù



ANNEXE I

If you want purchase the truck from us, we can propose

- Truck **IVECO STRALIS** , offered in 2 versions
Brochure déchargeable sur https://issuu.com/iveco1975/docs/new-iveco-stralis-brochure_b7a8da28b0c546?e=5200183/38765935
 - **IVECO AS440X46T HR ON+**(mechanical suspensions, *delivery time 5/6 months*)
 - **IVECO AS440S46T/P** (pneumatic suspensions, *delivery time 2 months*)

1st proposition **IVECO AS440X46T HR ON+**

AS HYWAY cabin

Clutch: manual 16 speeds

Axis configuration: 4x2

Front / rear disc brakes

Drive to the left

MTTG VW or GCW 18-20 tons

3800 mm pitch

Bridge: double reduction

Engine power C11 460 hp

Mechanical suspensions

Version: tractor

Equipped with

- Vehicle Kipper
- Reinforced front parabolic springs
- Lighthouse protection grille
- Front bumper made of sheet metal
- Ralla of 2 height 150 mm + plate 50 mm
- Ralla JOST
- Bridge report 4.23
- Spare wheel
- Inflating hose Tire 15 meters
- Tires 315/80 R22,5 versatility of use
- Battery 220Ah
- ABS + ASR brakes
- Cabin climate control with automatic adjustment
- Refrigerator cabin 50 lt
- 2 bunk beds with cab protection
- Leather steering wheel



2nd proposition **IVECO AS440S46T/P**

AS HYWAY cabin

Clutch: HI TRONIX 12 speed

Axis configuration: 4x2

Front / rear disc brakes

Drive to the left

MTTG VW or GCW 18-20 tons

3800 mm pitch

Bridge: simple reduction

Engine power C11 460 hp

Pneumatic suspensions

Version: tractor

With

- Telematic box
- Driving style evaluation + driver attention support (DSE + DAS)
- Vehicle Data Interface (FMS = Fleet Meeting system)
- Iveconnect (touch screen radio with browser)
- Refrigerator cabin 50 lt
- HIGH CONFORT pneumatic driver's seat in fabric (adjustable lumbar, ventilated, heated)
- Passenger seat in pneumatic adjustment fabric
- Tire Pressure Measurement Instrument (TPMS)
- Measure loads on the axes
- Spare wheel
- Ralla of 2 height 150 mm + plate 50 mm
- Ralla JOST
- 770 lt aluminum tank
- Predictive GPS DRIVE
- Cabin air suspension
- Cabin climate control with automatic adjustment
- 1 lower bed with compartment and cab protection
- Inflating hose Tire 15 meters
- Tires 315/80 R22,5 versatility of use
- Battery 220Ah
- ABS + ASR brakes
- Integrated hydraulic retarder
- Upper and lateral spoiler

